

## REPLACEMENT SPARES FOR POWER PLANT

- **Rotor shaft** of Steam Turbine
- **Throttle bush** for LCB Pump, Condensate Extraction Pump & PAC Pump -
- **Centre Bush** for Pump -
- **Case Wear Ring** of Water Pump -
- **Impeller Wear Ring** of Water Pump -
- Tungsten Carbide Coating on **Wearing Ring & Wearing Sleeve Assembly** of Vertical Screw Conveyor -
- **Shaft & Sleeve** of DT, IAT & FAT Acid feed Pump -
- **Upper Shaft Sleeve & Lower Shaft Sleeve** for PAC Pump -
- Refurbishment of **Head Shaft with Sleeve, Intermediate shaft with Sleeve & Impeller Shaft** of PAC Pump -
- Refurbishment of **Head Shaft, Intermediate Shaft & Impeller Shaft** of PAC Pump -
- Repairing of **Blower Bearing** for FF Fan Blower –
- Repairing of Bearing for Boiler Feed Pump
- **Generator Rotor Shaft of 500 mm Diameter** of Harbin make Turbine of 600 MW on Labyrinth seal area
- **Thrust Collar** of PA Fan
- Machining of **281 dia. Spigots of 25MW Steam Turbine** of Siemens make
- Machining of **182 dia. Spigots of 10MW Steam Turbine** of Siemens make
- Machining of **Trunion Shaft** of 1100 mm dia. & **Trunion Bearing** of Inlet of Ball mill-90T capacity
- Enlargement of PCD Holes on the **Diffuser Casing** of Siemens make 147 MW Turbine
- Adjustable **Machine Mount**

Radhika Technologies Pvt. Ltd. (RTPL) is in no way endorsed by any original equipment manufacturer (OEM) identified in this website/E-Mail/Promotional material. All OEM names are trademarks or registered trademarks of each respective owners. All manufacturer's name, part numbers, symbols & description used in RTPL website/E-Mails/Promotional material are for cross reference & compatibility purpose only & it is not implied that any part listed is the product of these original equipment manufacturer's. GE/MJB/FLS/Thomassen/Burckhardt/Ingersoll Rand/Dresser Rand or any other original equipment manufacturer is a registered trademark. It is not the intent of RTPL Website/E-Mail/promotional material to mislead or confuse anyone to believe that is officially affiliated with any original equipment manufacture & Infringes upon the intellectual property rights of any original equipment manufacturer.

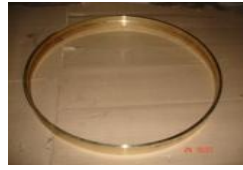
**REPLACEMENT SPARES FOR PUMP / BLOWER**



**CEP THROTTLE BUSH**



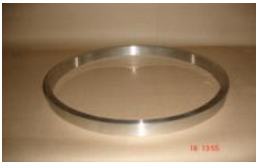
**CENTRE BUSH**



**CASING / WEARING RING**



**WEARING ASSEMBLY**



**IMPELLER WEAR RING**



**ACID PUMP SHAFT & SLEEVE**



**PAC UPPER SHAFT SLEEVE**



**PAC LOWER SHAFT SLEEVE**



**HEAD SHAFT SLEEVE**



**INTERMEDIATE SHAFT SLEEVE**



**HEAD SHAFT**



**IMPELLER SHAFT**



**INTERMEDIATE SHAFT**



**FF FAN BLOWER BEARING**



**BFP BEARING**



**GENERATOR ROTOR SHAFT  
500 MM DIA.**



**GENERATOR ROTOR SHAFT 500  
MM DIA.**



**THRUST COLLAR**



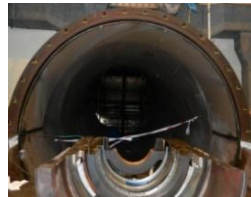
**TRUNION SHAFT**



**SPIGOT OF TURBINE**



**SPIGOT OF TURBINE**



**DIFFUSER CASING**



**ADJUSTABLE MACHINE MOUNT**

Radhika Technologies Pvt. Ltd. (RTPL) is in no way endorsed by any original equipment manufacturer (OEM) identified in this website/E-Mail/Promotional material. All OEM names are trademarks or registered trademarks of each respective owners. All manufacturer's name, part numbers, symbols & description used in RTPL website/E-Mails/Promotional material are for cross reference & compatibility purpose only & it is not implied that any part listed is the product of these original equipment manufacturer's. GE/MJB/FLS/Thomassen/Burckhardt/Ingersoll Rand/Dresser Rand or any other original equipment manufacturer is a registered trademark. It is not the intent of RTPL Website/E-Mail/promotional material to mislead or confuse anyone to believe that is officially affiliated with any original equipment manufacture & Infringes upon the intellectual property rights of any original equipment manufacturer.